

# UNIQUE™ IMPLANT



## Design Facts

With a rather conventional macroshape UNIQUE™ implant is a good solution for all cases requiring simple drilling protocol.

Tapered body mimics the natural root shape while slightly inward flat neck prevents stress on cortical bone.

## Indication Priority



Bone Type D1



Bone Type D2



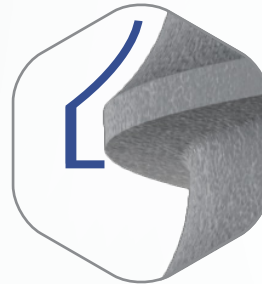
Bone Type D3

“COMFORT OF  
TIMELESS  
DESIGN!”



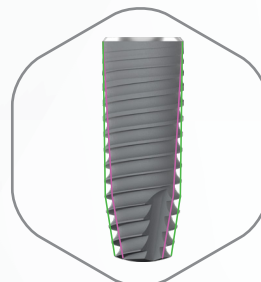
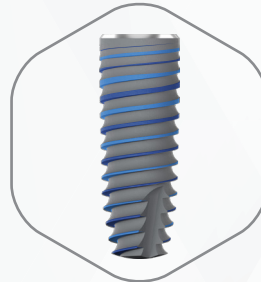
### Straight Neck

Slightly inward design eliminates the need for wider drilling. Provides cortical bone preservation for the long-term success of the implant.



### Combined Thread

Gradually expands bone starting from sharper threads to ACME threads thus securing stronger primary stability



### Tapered root-like body

Ensures maximum bone-implant-contact in step-drilled osteotomy.

### Dual Contour

Coronal part & body: straight  
Apical part: conical



### Apical Cutting Edge

helps easy insertion in narrower osteotomy.

# UNIQUE™ IMPLANT

## Dimensions



NP	Length (mm)	Diameter (mm)	Ref. Code
	8	3.3	123308N
	10		123310N
	11.5		123311N
	13		123313N
	16		123316N

NP	Length (mm)	Diameter (mm)	Ref. Code
	8	3.75	123708N
	10		123710N
	11.5		123711N
	13		123713N
	16		123716N

RP	Length (mm)	Diameter (mm)	Ref. Code
	8	4.2	124208R
	10		124210R
	11.5		124211R
	13		124213R
	16		124216R

RP	Length (mm)	Diameter (mm)	Ref. Code
	8	4.7	124708R
	10		124710R
	11.5		124711R
	13		124713R
	16		124716R

RP	Length (mm)	Diameter (mm)	Ref. Code
	8	5.3	125308R
	10		125310R
	11.5		125311R
	13		125313R
	16		125316R

\*Actual sizes

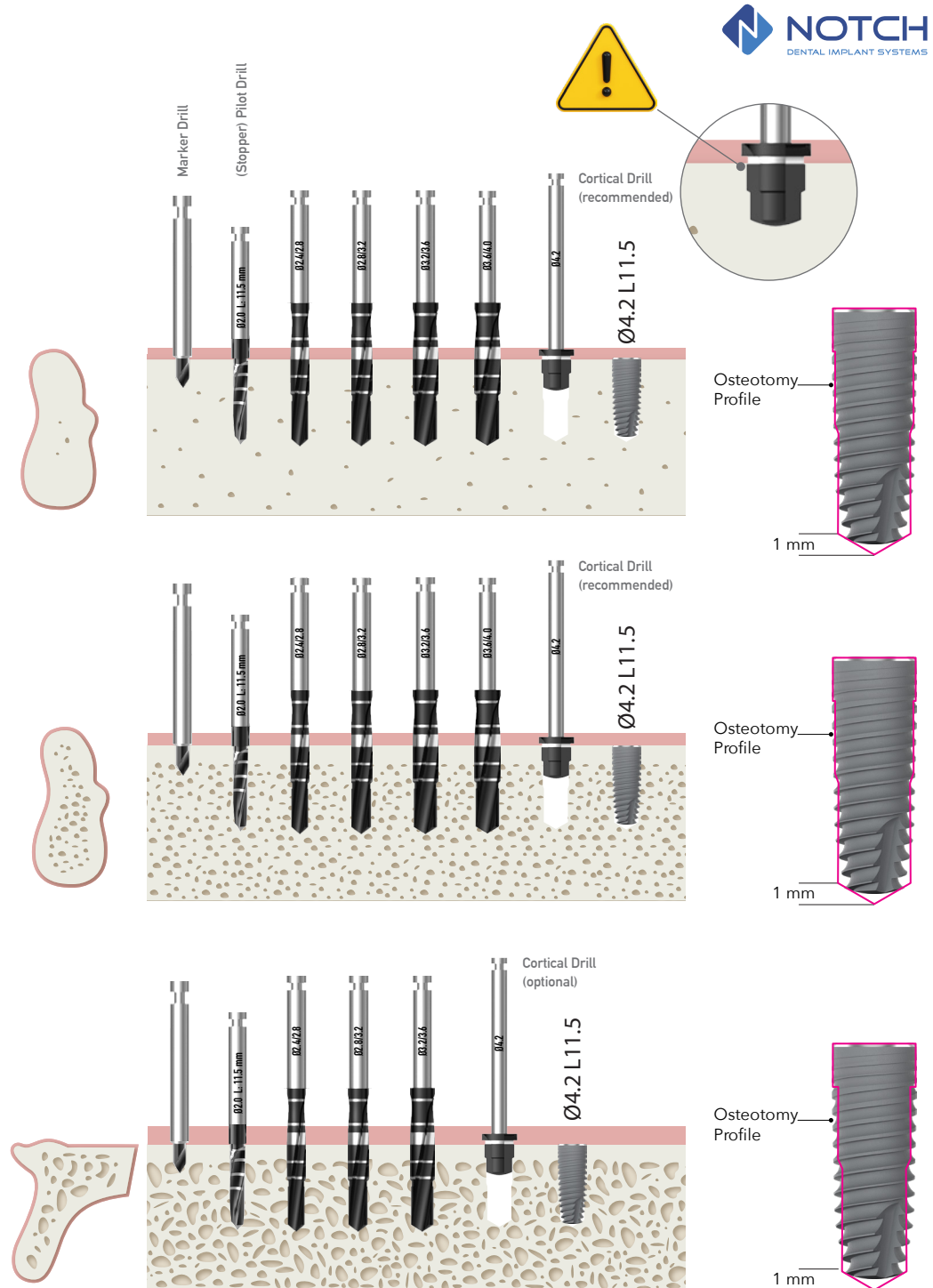
# DRILLING PROTOCOL

## UNIQUE™ Ø4.2 L11.5

**D1** Proceed drilling to “3.6 - 4.0 step drill” and finish with cortical drill. Place the implant 0.5 mm subcrestally.

**D2** Proceed drilling to “3.6 - 4.0 step drill” and finish with cortical drill. Place the implant 0.5 mm subcrestally.

**D3** 1 step narrower drilling protocol is recommended to have a better primary stability. Cortical drill can be used optionally to breakthrough the cortical bone.



*\*The images here may differ from the actual product.*