

# OVERDENTURE ABUTMENTS

For precise and durable overdentures NOTCH® Implant has a variety of options from conventional ball and locator abutments to innovative multi-loc coping.

## Ball Abutment

Used for implant-retained overdentures particularly in atrophied jaws. Parallelism is essential while using ball abutments.



Gingiva Height	NP	RP
1.0 mm	240010N	240010R
2.0 mm	240020N	240020R
3.0 mm	240030N	240030R
4.0 mm	240040N	240040R
5.0 mm	240050N	240050R
6.0 mm	240060N	240060R



## Locator Abutment

Used for implant-retained overdentures. Smaller vertical dimension and flat seating make Locator an ideal solution for the cases with esthetic demands. They also offer easier solution for the cases where parallelism is compromised.



Gingiva Height	NP	RP
1.0 mm	250010N	250010R
2.0 mm	250020N	250020R
3.0 mm	250030N	250030R
4.0 mm	250040N	250040R
5.0 mm	250050N	250050R
6.0 mm	250060N	250060R

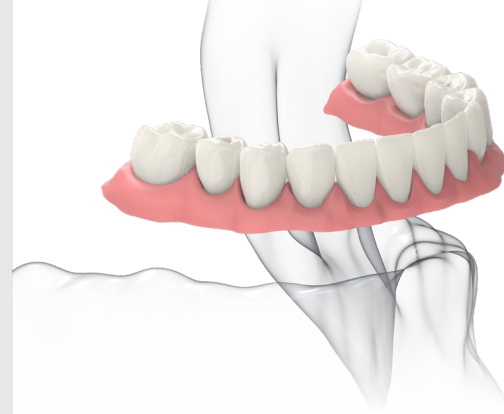


## Multi-Loc Overdenture


This innovative component equips dentists with two options with the cases requiring tilted implants. Multi-loc is used to have screw abutment supported overdenture or to switch to overdenture from fixed bridge.



Reference Code 280040C



## Overdenture Attachments

Notch Implant GmbH collaborates with companies worldwide in order to offer its customers the highest quality available. By this approach, we supply our elastic caps for overdenture solutions from the world-renowned Italian company .

### Retainers for Ball abutment



Color	Retention	Ref Code
Green	Elastic	AOD240140G
Yellow	Extra Soft	AOD240140Y
Pink	Soft	AOD240140P
Clear	Standart	AOD240140C
Black (Lab. Cap)	-	AOD240140B
Metal Housing	-	AOD240040M
Protective Disk	-	AOD240140D
Elastic Cap Pack	Multi	AOD240000P

### Retainers for Locator abutment



Type	Color	Retention	Ref Code
With Pin	Yellow	Extra Soft	AOD260140Y
	Pink	Soft	AOD260140P
	Clear	Standart	AOD260140C
Without Pin	Violet	Hard	AOD260140V
	Yellow	Extra Soft	AOD250140Y
	Pink	Soft	AOD250140P
	Clear	Standart	AOD250140C
	Violet	Hard	AOD250140V
	Black (Lab. Cap)	-	AOD250140B
	Metal Housing	-	AOD250140M
	Protective Disk	-	AOD250140D
	Elastic Cap Pack	Multi	AOD260000P

### Impression Coping

is used to make an impression of the positions of Locator abutments so that total denture is prepared in lab.

### Lab Analog

is used to replicate positions of Locator abutments in stone cast.



System	Product	Ref Code
Locator	Impression Coping	PLI381010S
	Lab Analog	PLA381010S
Ball	Impression Coping	PBI381010S
	Lab Analog	PBA381010S