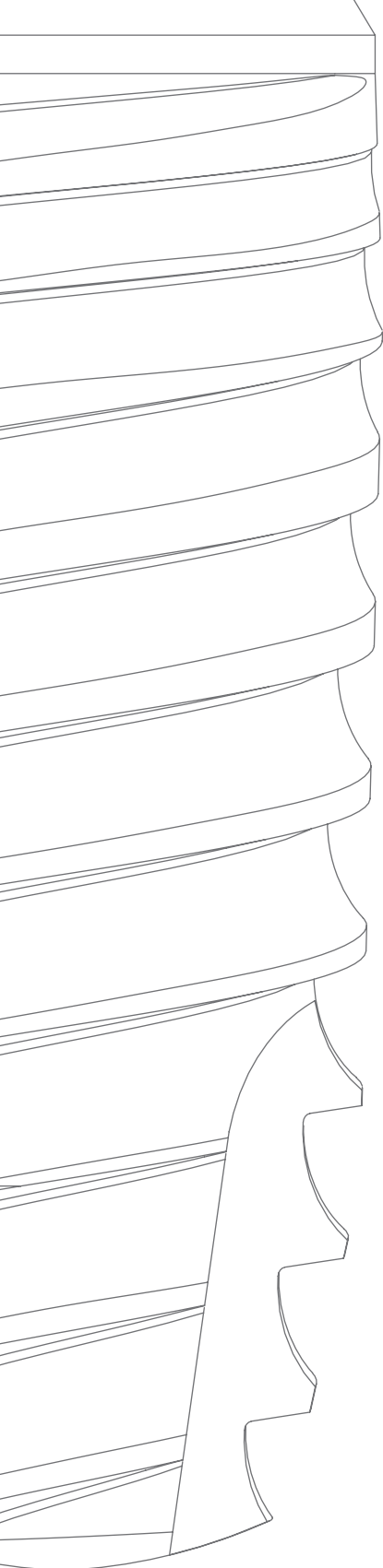




「 Product Catalog Vol.01 」

▶ notchimplant.com





CONTENTS

NOTCH® Implant General Features

Implant Platforms	7
Conical Connection	8
Calcioss™ Surface	10
One-4-All Concept	12

Implants

UNIQUE™ Implant	16
SMART™ Implant	20
SHORT™ Implant	24

Surgical Kit

Overview	26
Surgical Kit Tools	28

Superstructures

Prosthetics	32
Temporary Abutments	33
DUAL Abutments	33
ESTHETIC Abutments	34
Screw Abutments	36
Overdenture Abutments	40

Digital, Cad/Cam

Ti-Bases	43
Premil Abutments	43
Screw Retained Copings	43
Digital Components	44

NOTCH® IMPLANT GmbH has its registered place of business in Germany and the devices bearing the CE marking in accordance with the **Regulation (EU) 2017/745 of 5. April 2017 on medical devices** as amended may be marketed in the Union.

© All rights reserved



Meinerzhagen Premises

Quality, safety and reliability since 1988.

Our factory was established in 1988 and start manufacturing medical devices in 1991.

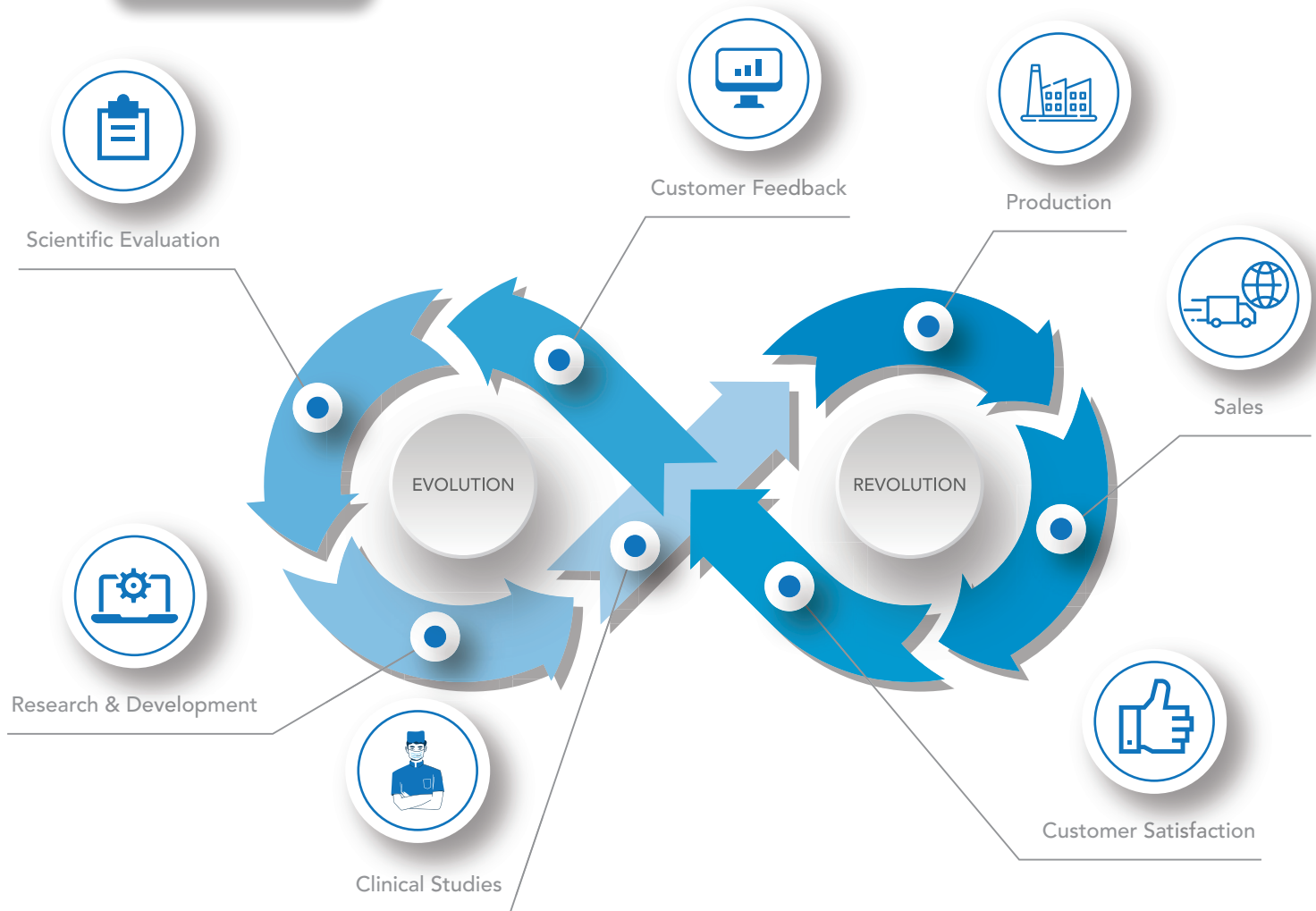
Our manufacturing tradition has brought us to excell in the production of high precision parts used in medical technology and the company has become one of the leading manufacturers in this field today. We have also applied our expertise in precision manufacturing in the field of dental implants and prosthetic parts since 2007.

As a recent product of decades of expertise, NOTCH® Implant will continue to develop with the principles of quality, product safety and reliability.




“YOUR
 OPINION
 MATTERS!”


NOTCH® listens to customer feedbacks to improve services and products continuously. NOTCH® values all opinions from professionals or end-users to involve them as part of future evolutions. Please share your opinions and be part of the evolution!




Reach us from:

 +49 2354 778 9224

 cr@notchimplant.com

 /notchimplant

 notchimplant.com

 @notchimplant

NOTCH Implant

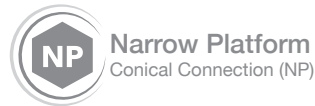
General Features

- IMPLANT PLATFORMS
- CONICAL CONNECTION
- CALCIOSS™ SURFACE
- ONE-4-ALL CONCEPT

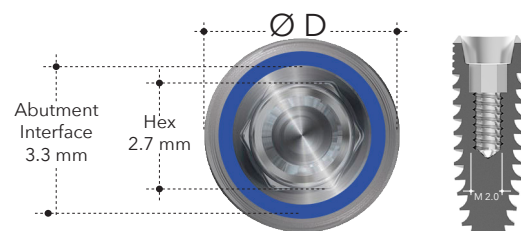
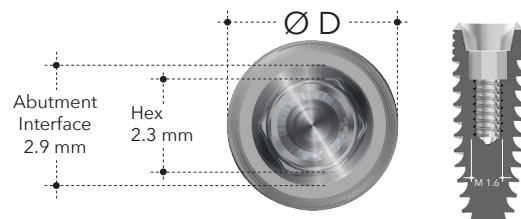


2 INTERNAL PLATFORM

NOTCH® engineers give priority to keep the mechanical strength of narrow platform implants with internal connection at the optimum level. Clinical results and our long-term mechanical tests have shown that it is safer to use a narrower prosthetic connection for the implants with $\text{Ø}3 \sim$ mm diameter.



	NP		RP		
	$\text{Ø}3,3$	$\text{Ø}3,75$	$\text{Ø}4,2$	$\text{Ø}4,7$	$\text{Ø}5,3$
UNIQUE™					
SMART™					
SHORT™					





INTERNAL CONICAL
CONNECTION



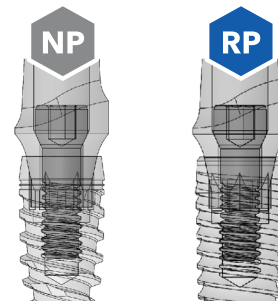
Precise connection design distributes load evenly and offers seamless interface preventing microleaks.

The hexagonal interlocking at the base of the connection provides secure positioning of abutments.

Implant internal conical connection with hexagonal interlocking offers a tight seal and high mechanical strength.



All the NOTCH® implants share the same NP/RP connection properties.



Excellent Purity

%100 Biocompatible

Biphasic Calcium Phosphate

HA Hydroxyapatite % ≥ 70

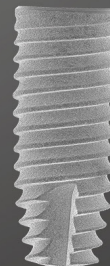
Tricalcium Phosphate % ≤ 25
b-TCP, a-TCP, TTCP phases

Other CaP phases % ≤ 5

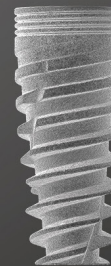
Superior Hydroxyapatite Surface Morphology

calci^oss™

UNIQUE



SMART



calciOSS™

Perfect Homogeneity for Ideal Osseointegration

CalciOSS™ surface treatment enhances the surface topography for faster osteoblast proliferation.

For CalciOSS™ surface treatment BCP (Biphasic Calcium Phosphate) bioceramics consisting of hydroxyapatite (HA) and β -TCP (beta-tricalcium phosphate), is used.

BCP comes in the form of abrasive particles and blasted by hi-tech robotic micro-blasting machine to obtain a biocompatible surface with ideal RA.

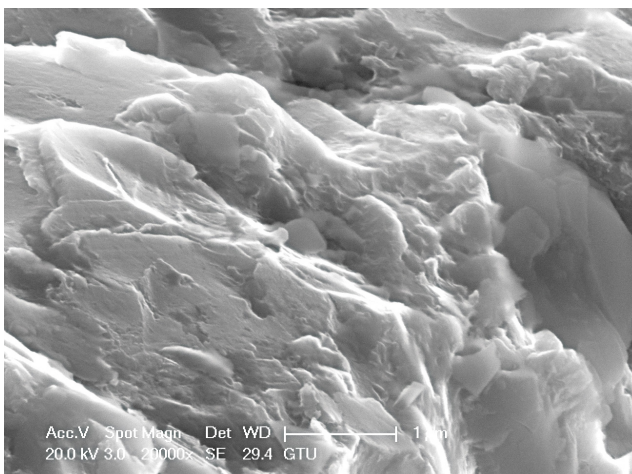
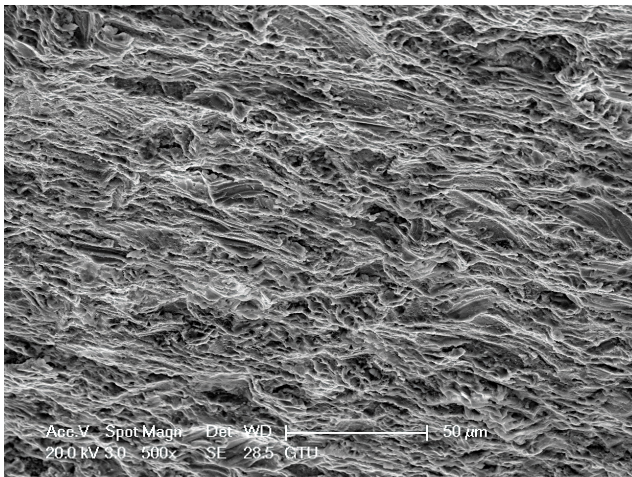
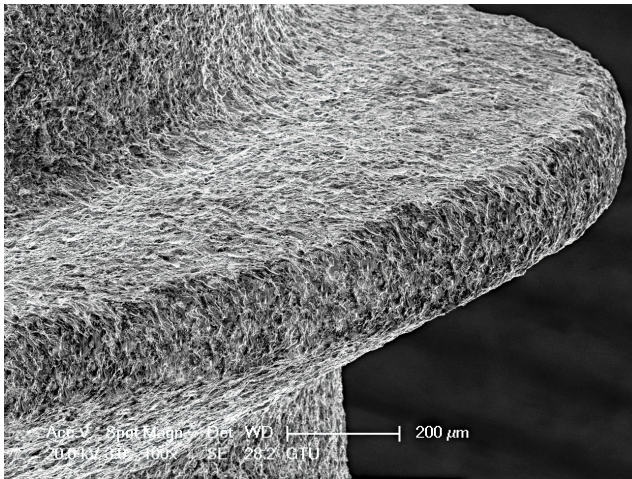
Homogenous Microblast Texture

> RA : 1.5 ~ 2.0 μ m

Homogeneity and microtopography plays a key role during osseointegration in providing better BIC and cell proliferation. Robotic blasting guarantees perfectly homogenous surface with 1.5~2.0 μ m RA.

Successful Clinical Performance

By employing acid-free processing which eliminates the risk of possible acid residue interference in the healing process NOCTH® implant offers desirable clinical results for all surgical protocols and long term survival.





ONE  **ALL**

In order to facilitate your implant applications, all NOTCH® products are designed according to the "One-4-All" concept to make the workflow easier for surgical and prosthetic phase and a smaller room for your product stock.

ONE/ALL SURGICAL KIT

All NOTCH® Implant fixtures can be placed with the same surgical kit. Easy-to-navigate unique design gets the surgeon focus on the tools needed for a particular phase. A regeneration section is added to handle often needed bone augmentation procedures.



ONE/ALL ABUTMENT

All abutments in NOTCH™ Implant System are compatible with all NOTCH® implant types on the corresponding platform. In certain cases implants with different macroshapes might be needed in the same jaw. Being able to use different implant models in the same jaw with a single abutment line will provide great convenience for both the dentist and the laboratory.



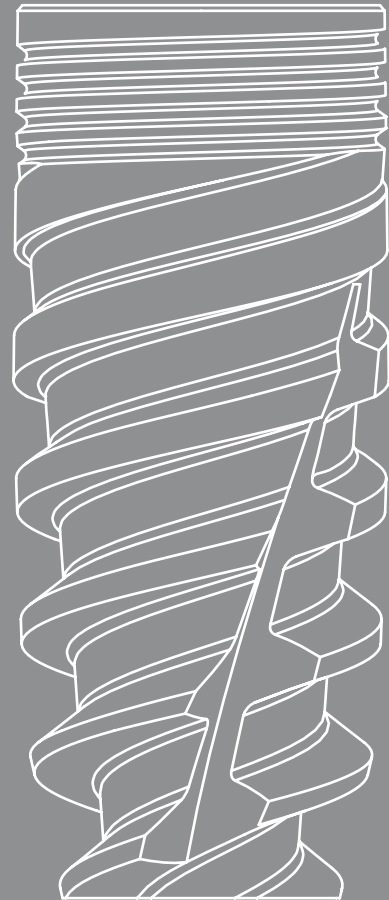
ONE/ALL PROSTHETICS

All prosthetics in NOTCH® Implant System are compatible with all NOTCH® implant models on the corresponding platform. Another easy-to-go solution with much less confusion to save time.



Implants

- **UNIQUE™**
- **SMART™**
- **SHORT™**



“EXCELLENT
PERFORMANCE
IN **IMPLANT**
DENTISTRY!”

UNIQUE™ IMPLANT



With a rather conventional macroshape UNIQUE™ Implant is one-implant-to-go for all indications. The tapered form gradually compresses the underprepared osteotomy in loose bone whereas it fits nicely in regular osteotomy in harder bones. Easy drilling and surgical protocol makes it a user friendly implant with successful clinical results.

SMART™ IMPLANT



SMART™ Implant is the optimal solution for immediate implantation and immediate loading. Implant body and thread design condense bone during insertion, providing high primary stability particularly in compromised bone situations. The apex and body structure is fully compatible with the step drills in the surgical kit.

SHORT™ IMPLANT



SHORT™ Implant features an aggressive thread profile and a tapered body and designed especially for the cases where inadequate bone is present.

6 mm rough surface allows clinicians to avoid vital structures with confidence therefore to eliminate the need for grafting procedures that are complicated and slow to heal. 1.4 mm transgingival part makes it easier-to-use in posterior region.

UNIQUE™ IMPLANT



Design Facts

With a rather conventional macroshape UNIQUE™ implant is a good solution for all cases requiring simple drilling protocol.

Tapered body mimics the natural root shape while slightly inward flat neck prevents stress on cortical bone.

Indication Priority



Bone Type D1

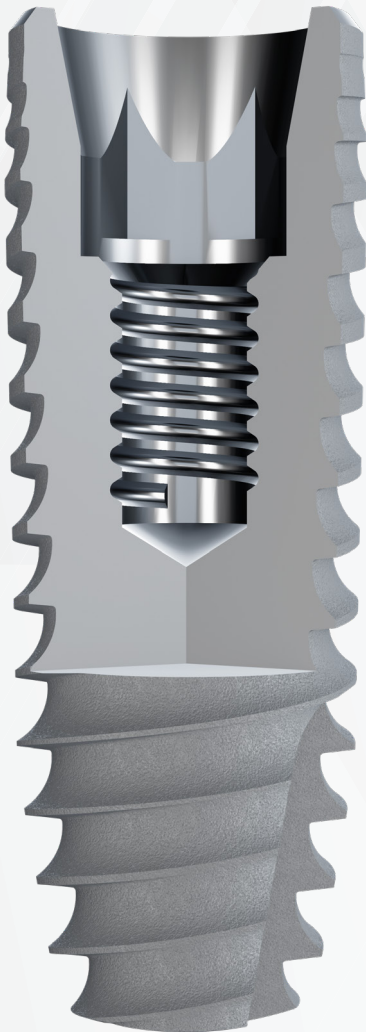


Bone Type D2



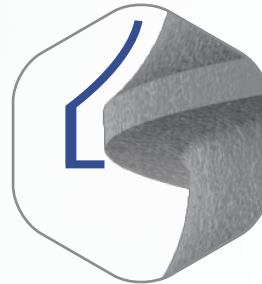
Bone Type D3

“COMFORT OF
TIMELESS
DESIGN!”



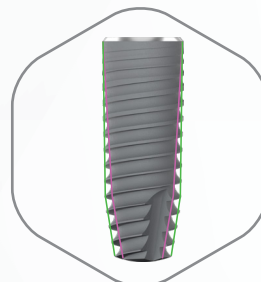
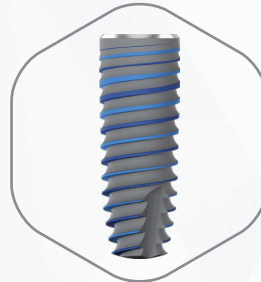
Straight Neck

Slightly inward design eliminates the need for wider drilling. Provides cortical bone preservation for the long-term success of the implant.



Combined Thread

Gradually expands bone starting from sharper threads to ACME threads thus securing stronger primary stability



Tapered root-like body

Ensures maximum bone-implant-contact in step-drilled osteotomy.



Dual Contour

Coronal part & body: straight
Apical part: conical

Apical Cutting Edge

helps easy insertion in narrower osteotomy.

UNIQUE™ IMPLANT

Dimensions



NP	Length (mm)	Diameter (mm)	Ref. Code
	8	3.3	123308N
	10		123310N
	11.5		123311N
	13		123313N
	16		123316N



NP	Length (mm)	Diameter (mm)	Ref. Code
	8	3.75	123708N
	10		123710N
	11.5		123711N
	13		123713N
	16		123716N



RP	Length (mm)	Diameter (mm)	Ref. Code
	8	4.2	124208R
	10		124210R
	11.5		124211R
	13		124213R
	16		124216R



RP	Length (mm)	Diameter (mm)	Ref. Code
	8	4.7	124708R
	10		124710R
	11.5		124711R
	13		124713R
	16		124716R



RP	Length (mm)	Diameter (mm)	Ref. Code
	8	5.3	125308R
	10		125310R
	11.5		125311R
	13		125313R
	16		125316R

*Actual sizes

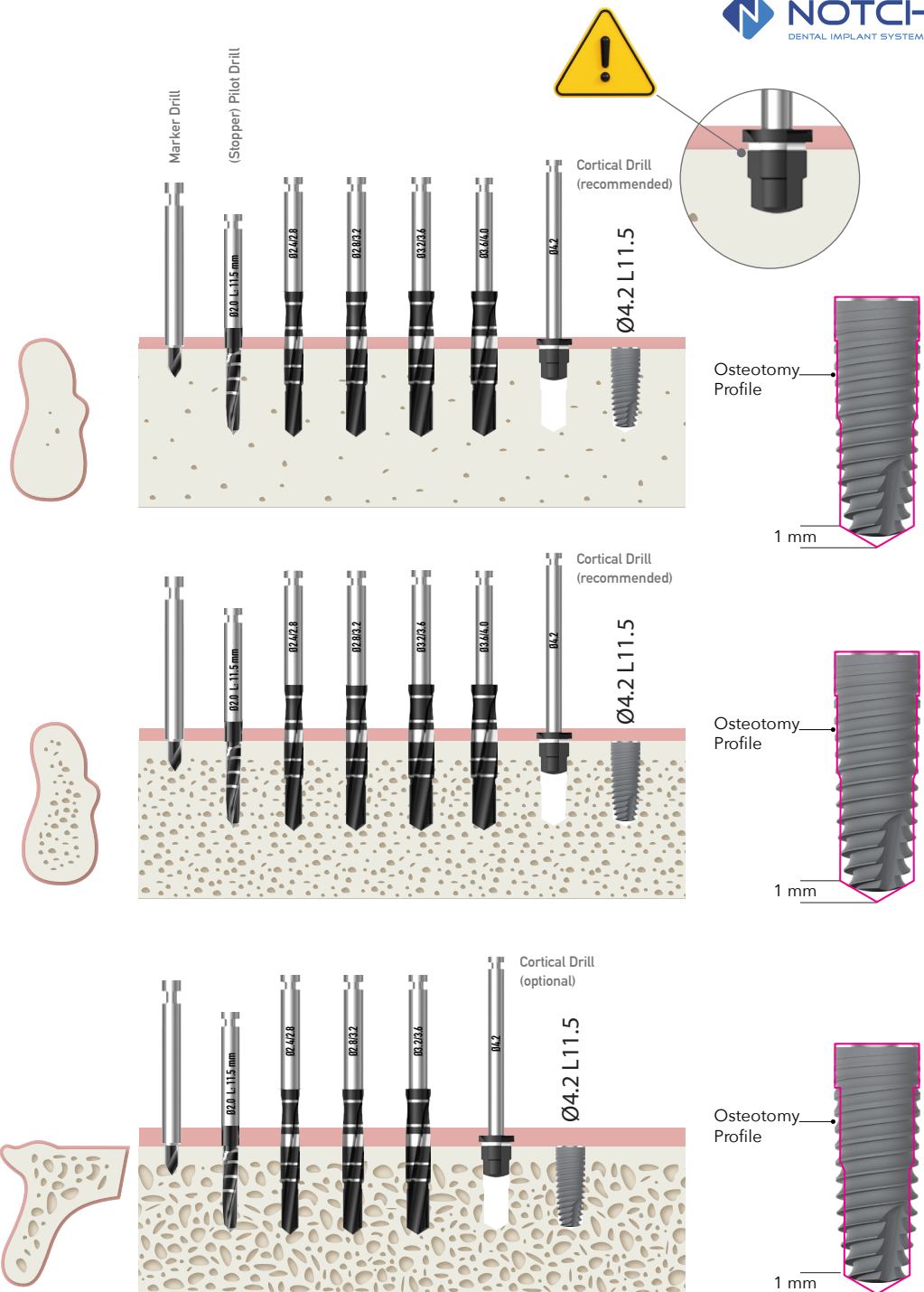
DRILLING PROTOCOL

UNIQUE™ Ø4.2 L11.5

D1 Proceed drilling to “3.6 - 4.0 step drill” and finish with cortical drill. Place the implant 0.5 mm subcrestally.

D2 Proceed drilling to “3.6 - 4.0 step drill” and finish with cortical drill. Place the implant 0.5 mm subcrestally.

D3 1 step narrower drilling protocol is recommended to have a better primary stability. Cortical drill can be used optionally to breakthrough the cortical bone.



**The images here may differ from the actual product.*

SMART™ IMPLANT



Design Facts

SMART™ implant is primarily designed for immediate and early loading protocols in compromised bones.

By following a flexible surgical protocol adjusted to the bone type ideal primary stability can be achieved.

Blade type apex and cutting edges enable you to readjust implant axis for optimal restorative orientation and esthetic results.

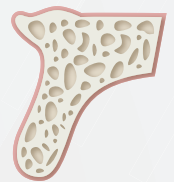
Indication Priority



Extraction Socket

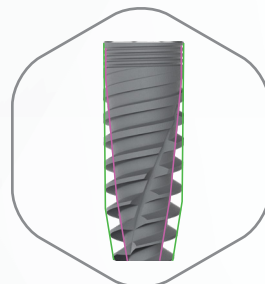
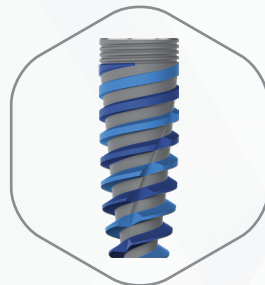
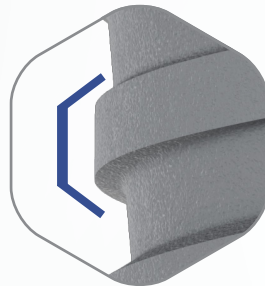
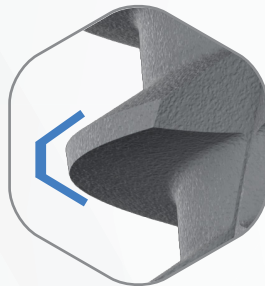
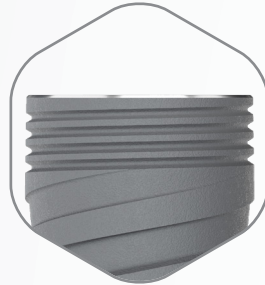


Bone Type D4



Bone Type D3

“PRIMARY STABILITY ASSURED!”



Straight Neck & Micro Grooves

Slightly inward design eliminates the need for wider drilling. Provides cortical bone preservation for the long-term success of the implant. Micro grooves reduce stress on cortical bone and form circular bone barriers in peri-implant area.

Combined Thread

Gradually expands bone starting from sharper threads to ACME threads thus securing stronger primary stability

Tapered root-like body

Ensures maximum bone-implant-contact in step-drilled osteotomy.

Dual Contour

Coronal part & body: straight
Apical part: conical

Double-Helix Thread

for increased primary stability and decreased micromovements

Apical Cutting Edge

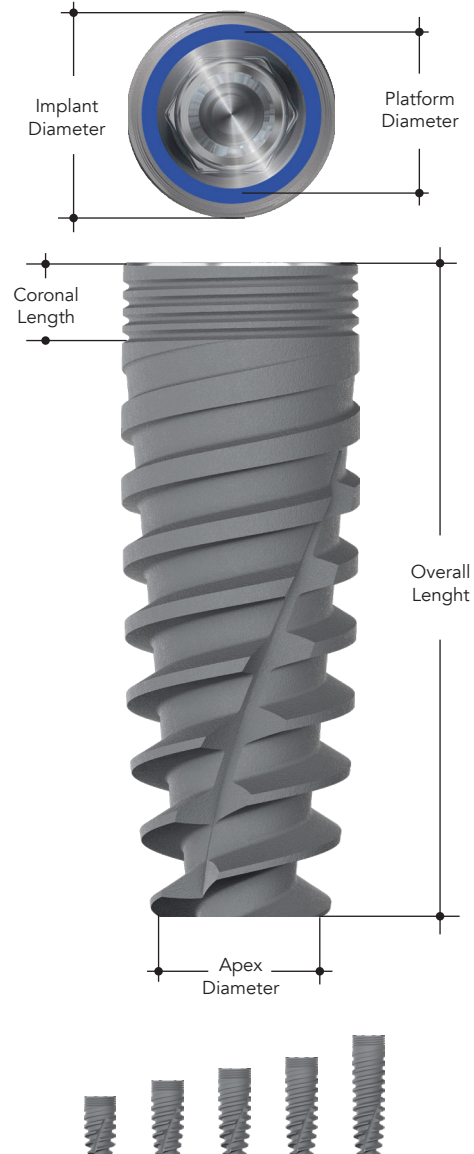
helps easy insertion in narrower osteotomy.

Blade-like Tip

helps to re-align axis during insertion.

SMART™ IMPLANT

Dimensions



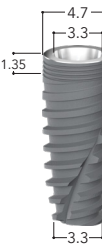
NP	Length (mm)	Diameter (mm)	Ref. Code
	8	3.3	113308N
	10		113310N
	11.5		113311N
	13		113313N
	16		113316N



NP	Length (mm)	Diameter (mm)	Ref. Code
	8	3.75	113708N
	10		113710N
	11.5		113711N
	13		113713N
	16		113716N



RP	Length (mm)	Diameter (mm)	Ref. Code
	8	4.2	114208R
	10		114210R
	11.5		114211R
	13		114213R
	16		114216R



RP	Length (mm)	Diameter (mm)	Ref. Code
	8	4.7	114708R
	10		114710R
	11.5		114711R
	13		114713R
	16		114716R



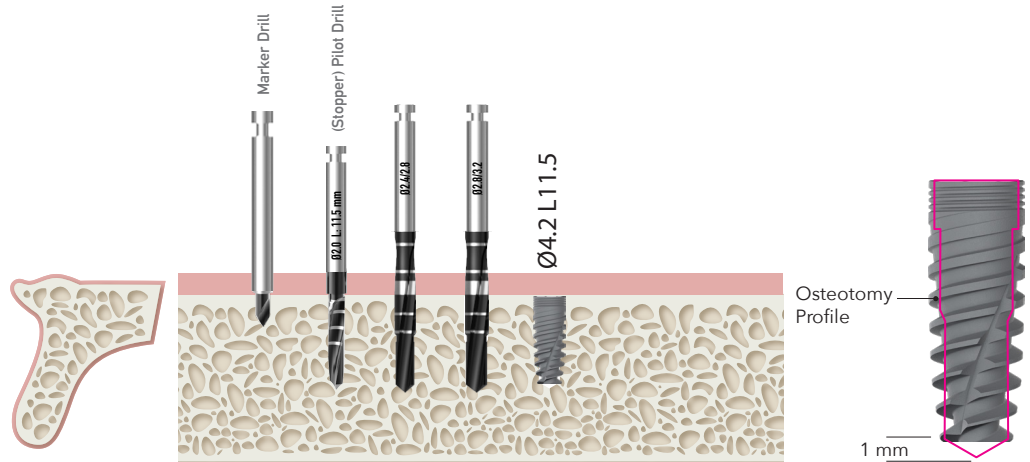
RP	Length (mm)	Diameter (mm)	Ref. Code
	8	5.3	115308R
	10		115310R
	11.5		115311R
	13		115313R
	16		115316R

*Actual sizes

DRILLING PROTOCOL

SMART™ Ø4.2 L11.5

D4 2 step narrower drilling protocol is recommended to have a better primary stability. Step drilling allows a stronger grip at the apical part. Tapping drill can be used optionally to breakthrough the cortical bone. Place the implant 0.5 mm subcrestally.



D3 1 step narrower drilling protocol is recommended to have a better primary stability. Step drilling allows a stronger grip at the apical part. Tapping drill can be used optionally to breakthrough the cortical bone.



D2 proceed drilling to "3.6 - 4.0 step drill" and finish with cortical drill. In the case that insertion torque exceeds 70 NCM, reverse the implant 1/2 turn and continue insertion. If you feel strong resistance, remove the implant, place it into the tube, widen the osteotomy one step further.



**The images here may differ from the actual product.*

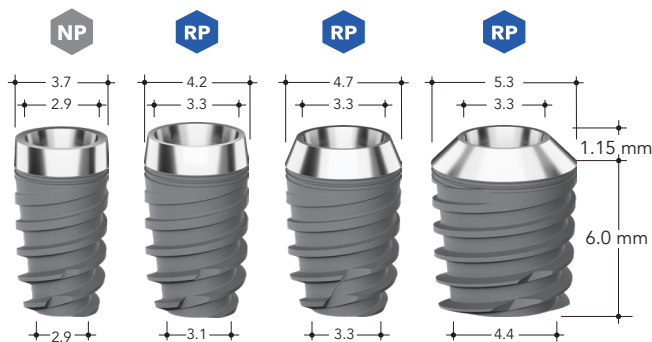
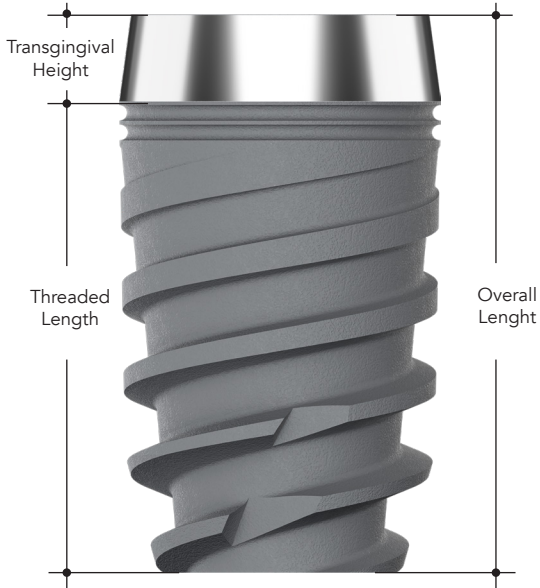
SHORT™ IMPLANT

“SHORTCUT
FOR LESS
SURGERY”

Design Facts

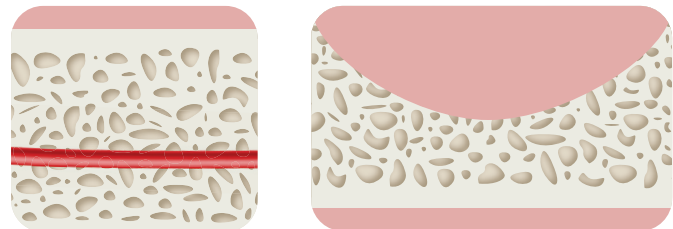
The SMART™ short is designed to be implanted in areas with insufficient vertical bone without performing complicated augmentation procedures.

It provides safer implantation with flat apex when working close to critical anatomical structures.



Length (mm)	Diameter (mm)			
6	3.75	4.2	4.7	5.3
Ref. Code	133760N	134260R	134760R	135360R

Indication Priority



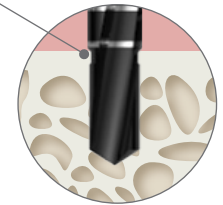
Insufficient bone height limited by nerve canal
or sinus pneumatization

DRILLING PROTOCOL

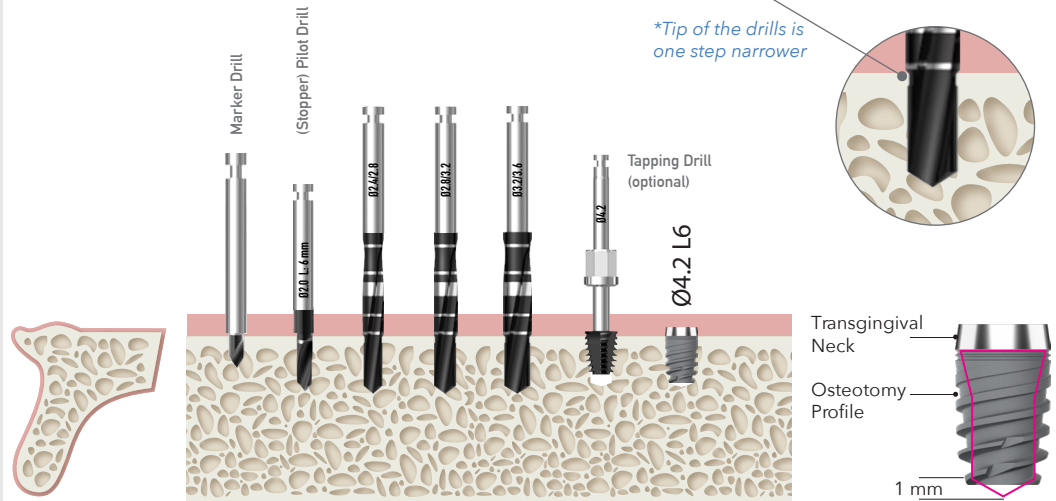
SHORT™ Ø4.2 L6



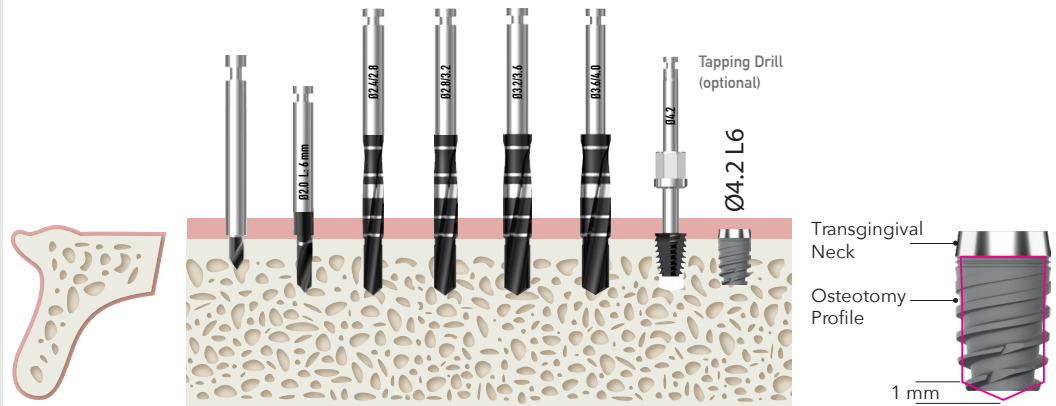
*Tip of the drills is one step narrower



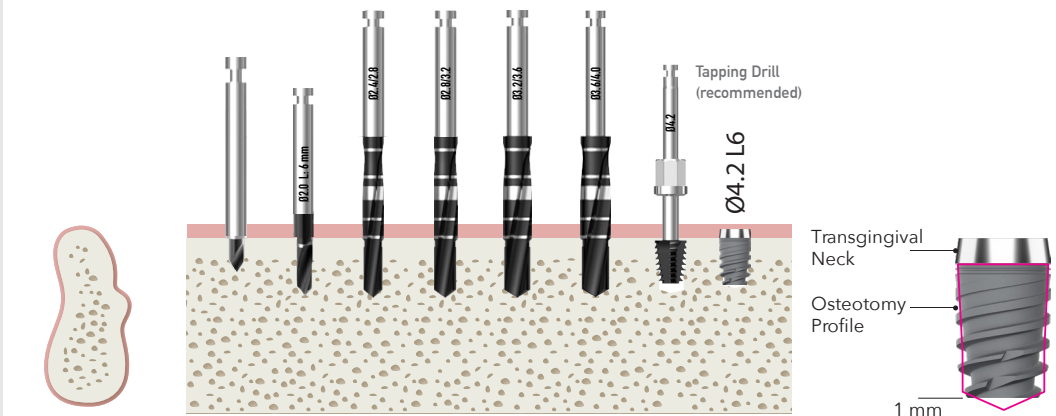
D4 2 step narrower drilling protocol is recommended to have a better primary stability. Step drilling allows a stronger grip at the apical part. Tapping drill can be used optionally to breakthrough the cortical bone.



D3 1 step narrower drilling protocol is recommended to have a better primary stability. Step drilling allows a stronger grip at the apical part. Tapping drill can be used optionally to breakthrough the cortical bone.



D2 proceed drilling to "3.6 - 4.0 step drill" and finish with tapping drill. In the case that insertion torque exceeds 80 NCM, reverse the implant 1 step and continue insertion. Use of tapping drill is strongly recommended.



*The images here may differ from the actual product.

Surgical Kit

DRILLS & TOOLS

- SURGICAL KIT LAYOUT
- CONCEPT





ONE **ALL**
SURGICAL KIT

All implants in the NOTCH® Implant System can be placed with the same NOTCH® surgical kit.

SURGICAL KIT layout

To avoid any confusion and to follow "ease of use" principle NOTCH® designed all implants to be placed with only one surgical kit. For easy navigation the kit is divided into 3 section: SURGERY, DRIVE and REGENERATION.

EASY-TO-NAVIGATE LAYOUT

Sectioned layout of Surgical Kit provides access to the right tool at a glimpse during the surgery.

REGENERATION

Cortical Drills (UNIQUE™ Implant)

ØD (mm)	Ref. No
Ø3.75	543700C
Ø4.2	544200C
Ø4.7	544700C
Ø5.3	545300C

Tapping Drills (SMART™ Implant)


ØD (mm)	Ref. No
Ø3.75	533700B
Ø4.2	534200B
Ø4.7	534700B
Ø5.3	535300B

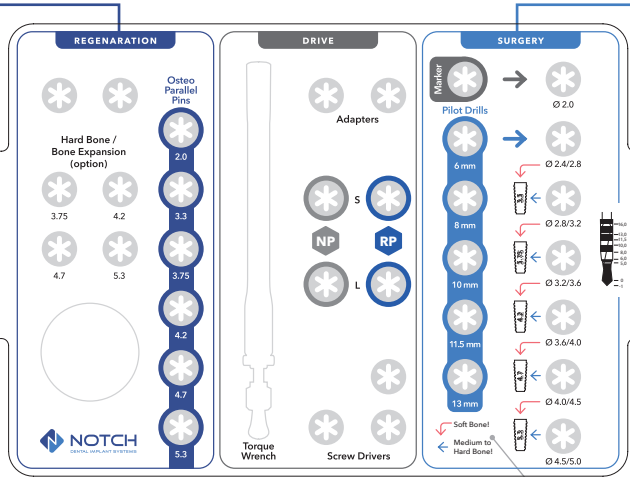
Parallel Pin/Depth Guide/ Osteo-pin

ØD (mm)	Ref. No
Ø2.0	522020P
Ø3.3	523300P
Ø3.75	523700P
Ø4.2	524200P
Ø4.7	524700P
Ø5.3	525300P

Handle Driver

561001H





REGENERATION

DRIVE

SURGERY

MARKER

Pilot Drills

Adapters

Torque Wrench

Screw Drivers


Soft Bone!

Medium to Hard Bone!

SURGERY

Marker Drill

511818D




Stopper Pilot Drills

Length	DØ (mm)	Ref. No
L: 6 mm	2.0	512006D
L: 8 mm		512008D
L: 10 mm		512010D
L: 11.5 mm		512011D
L: 13 mm		512013D

Twist Drills


DØ (mm)	Ref. No
Ø2.4/2.8	512428D
Ø2.8/3.2	512832D
Ø3.2/3.6	523236D
Ø3.6/4.0	523640D
Ø4.0/4.5	524045D
Ø4.5/5.0	524550D



13 mm


Soft Bone!

Medium to Hard Bone!




Torque Wrench

561000T



Ratchet Adapter

554018A




Implant Driver

Platform	Ref. No
NP (S)	552228I
NP (L)	552237I
RP (S)	552628I
RP (L)	552637I


Screw Driver (Hex. 1.25 mm)

Short	550010S
Long	550020S
Hand-piece	550030S



Shank Extension

512020H



SURGERY

Drills are placed at the right-hand side of the plate. The basic idea behind this design is to enable users access the sharp pieces without worrying about tearing gloves. "marker" is the starting drill which is followed by "pilot drills" or optionally by 2.0 "twist drill". Blue arrows lead to the corresponding implant diameter while the red arrows suggest final drills for soft bone.

DRIVE

All necessary drivers including screw abutment driver are located in the middle of the kit for easy access and right at the eye sight.

REGENERATION

REGENERATION section is added to allow you handle 2 often-needed bone regeneration procedures:

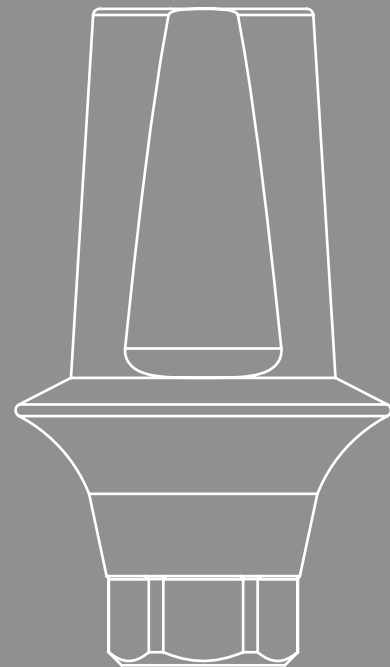
- 1) Grafting
- 2) Osteotomy

"Osteo Parallel Pins" are used as direction indicator and depth gauge. When combined with "handle" in the lower tray an easy osteotome kit is at hand.



Superstructures

- **PROSTHETICS** (IMPLANT LEVEL)
- **CEMENT** RETAINED ABUTMENTS
- **SCREW** RETAINED ABUTMENTS
- **OVERDENTURE** ABUTMENTS
- **DIGITAL** CAD/CAM COMPONENTS





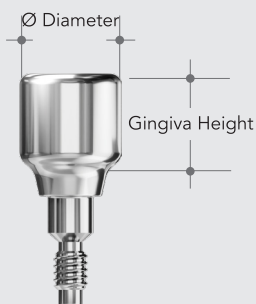
ONE / **ALL**
ABUTMENT

All abutments in the NOTCH® Implant System are compatible with all NOTCH® implants on the corresponding platform.

Implant Level PROSTHETICS

Healing Abutment

Notch Implant System offers a wide range of healing abutments to cover variable indications. All healing abutments are compatible with all NOTCH® implants on the corresponding platform.



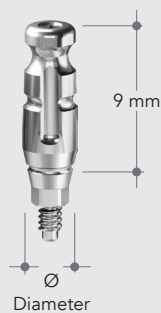
Impression Copings

NOTCH® Implant System offers a range of impression coping components providing a choice between open or closed tray impression protocols.

OPEN TRAY



CLOSED TRAY



IMPLANT LAB. ANALOG



HEALING ABUTMENT		NP		RP	
		Ø3.6	Ø4.5	Ø5	Ø6
Gingiva Height	3 mm	213630N	214530N	215030R	216030R
	5 mm	213650N	214550N	215050R	216050R
	7 mm	213670N	214570N	215070R	216070R

OPEN TRAY IMPRESSION COPING		NP		RP	
		Ø3.6	Ø4.5	Ø5	Ø6
Ref. Code		313600N	314500N	315000R	316000R

CLOSED TRAY IMPRESSION COPING		NP		RP			
		Ø3.6	Ø4.5	Ø4	Ø4.5	Ø5	Ø6
9 mm							
Ref. Code		303600N	304500N	-	-	305000R	306000R
13 mm							
Ref. Code		PIC303613N	PIC304513N	PIC304013R	PIC304513R	-	-

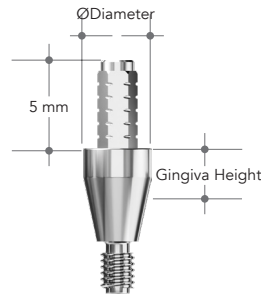
ANALOG		NP	RP
		Ref. Code	


TEMPORARY ABUTMENTS


Immediate Temporary Abutment

is a good option when immediate provisionalization is required. Its sleek post design allows the dentist finish the case chairside within minutes.

Chairside



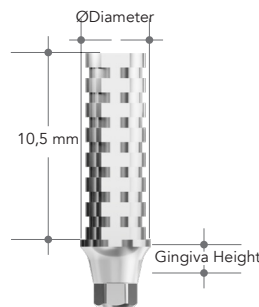
	Profile D.	Gingiva Height	Post Height	Ref. Code
 NP	3.5	1.5	5	270115N
		3.0		270130N


	Profile D.	Gingiva Height	Post Height	Ref. Code
 RP	3.9	1.5	5	270115R
		3.0		270130R


Temporary Abutment (engaging)

is used for single-tooth immediate provisionalization. Deep and sharp grooves provide strong retention.

Chairside/Dental Lab



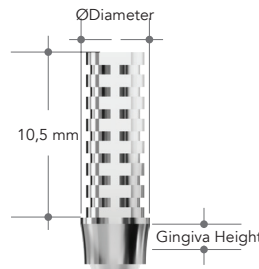
	Profile D.	Gingiva Height	Post Height	Ref. Code
 NP	4	1.5	5	270215N


	Profile D.	Gingiva Height	Post Height	Ref. Code
 RP	4.5	1.5	5	270215R
		3.0		270230R


Temporary Abutment (non-engaging)

is used for multiple-tooth immediate provisionalization. Deep and sharp grooves provide strong retention.

Chairside/Dental Lab



	Profile D.	Gingiva Height	Post Height	Ref. Code
 NP	4	1.5	5	270315N
		3.0		270330N


	Profile D.	Gingiva Height	Post Height	Ref. Code
 RP	4.5	1.5	5	270315R
		3.0		270330R


DUAL ABUTMENT

Dual Abutment is used for both single and multiple unit restorations.

Dental Lab



	Profile D.	Gingiva Height	Post Height	Ref. Code
 NP	4.5	1.5	6	224515N
		3.0		224530N
		4.5		224545N

	Profile D.	Gingiva Height	Post Height	Ref. Code
 RP	4.5	1.5	6	224515R
		3.0		224530R
		4.5		224545R
	5.5	1.5	6	225515R
		3.0		225530R
		4.5		225545R

ESTHETIC ABUTMENTS

ESTHETIC Abutment

ESTHETIC abutments mimic the anatomic contour of natural gum allowing dentists and technicians to obtain more esthetic results.



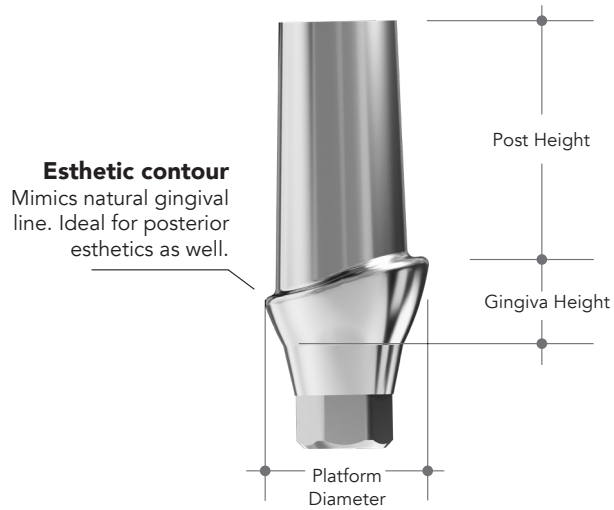
Angled ESTHETIC Abutment

Angled ESTHETICS abutments mimic the anatomic contour of natural gum allowing dentists and technicians to obtain more esthetic results.



Optimal **anatomic** shape of
natural **gum line** and
esthetic results...

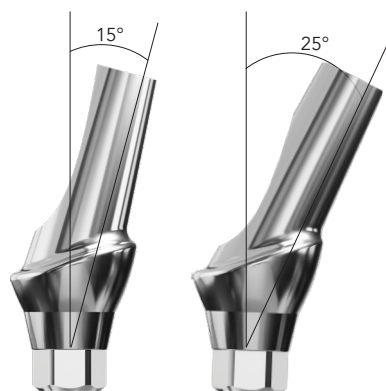
ESTHETIC Abutment



NP	Profile D.	Gingiva Height	Post Height	Ref. Code
 25 NCM	4.5	1.5	5	230015N
		3.0		230030N
		4.5		230045N

RP	Profile D.	Gingiva Height	Post Height	Ref. Code
 35 NCM	4.5	1.5	5	230015R
		3.0		230030R
		4.5		230045R
	5.5	1.5	5	230115R
		3.0		230130R
		4.5		230145R

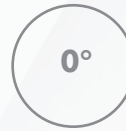
Angled ESTHETIC Abutment



NP	Angle	Gingiva Height	Post Height	Ref. Code
 25 NCM	15°	1.5	5	231515N
		3.0		231530N
		4.5		231545N
	25°	1.5	5	232515N
		3.0		232530N
		4.5		232545N

RP	Angle	Gingiva Height	Post Height	Ref. Code
 35 NCM	15°	1.5	5	231515R
		3.0		231530R
		4.5		231545R
	25°	1.5	5	232515R
		3.0		232530R
		4.5		232545R

SCREW ABUTMENTS



Screw Abutment



Angled Screw Abutment



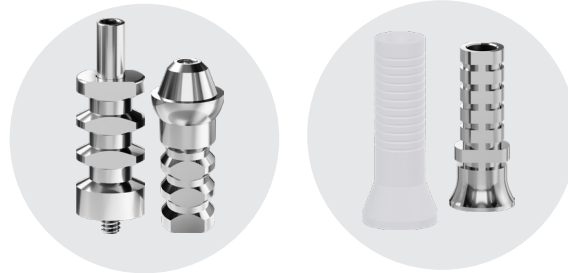
SCREW RETAINED RESTORATIONS

Screw-retained restoration procedure allows simple and easy removal and maintenance of prosthesis during routine checkups, with minimum risk of damaging the restoration. Digital components offer full digital workflow.

Partial



Internal conical connection with hexagonal interlocking offers a tight seal and high mechanical strength.



Full



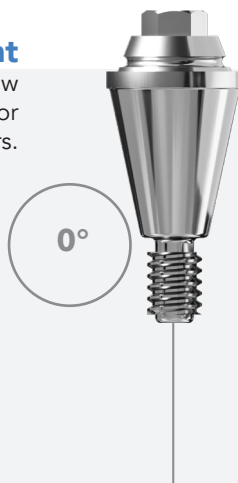
For conventional immediate restoration a titanium temporary abutment can be used. Burn-out cylinder is used for final metal cast restoration.



Digital scanbody and analog are used to make CAD/CAM restorations. Final restoration is cemented to metal coping and fixed onto screw abutment.

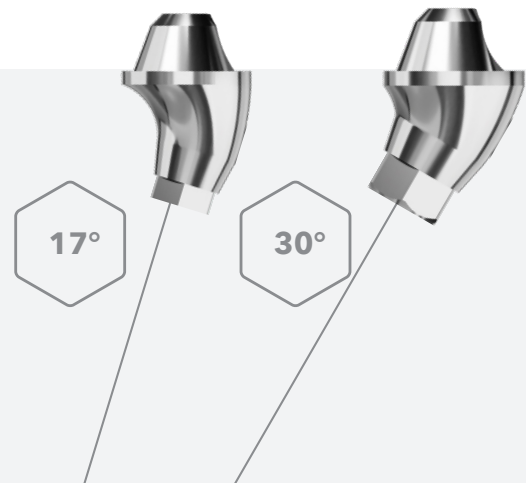
Screw Abutment

is used for screw retained prosthesis for bridges and bars.

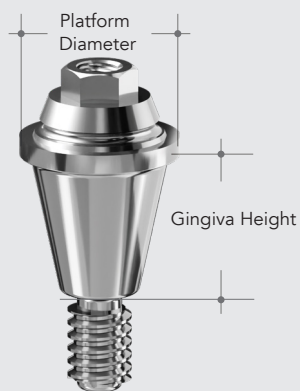




Angled Screw Abutment

allows to place tilted implants to avoid anatomically compromised parts in upper and lower jaw. Seamless round shape ensures easier fitting into the implant when compared conventional designs.





Screw Abutment



	Gingiva Height	Platform Diameter	Ref. Code
 	1.5	4.8	260015N
	2.5		260025N
	3.5		260035N





	Gingiva Height	Platform Diameter	Ref. Code
 	1.5	4.8	260015R
	2.5		260025R
	3.5		260035R
	4.5		260045R





Angled Screw Abutment



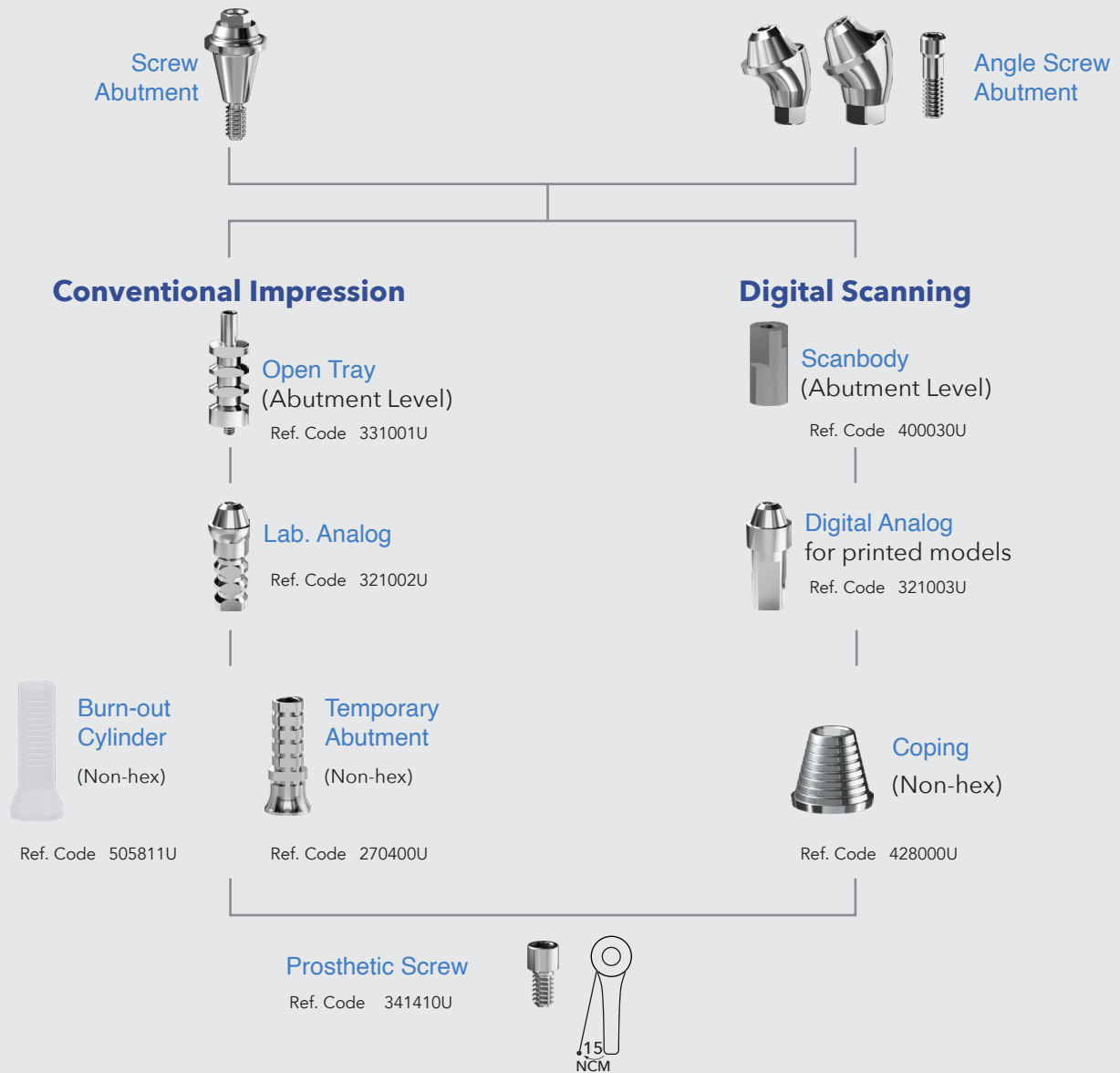
	Angle	Gingiva Height	Platform Diameter	Ref. Code
 	17°	2.7	4.8	261727N
		3.5		261735N
	30°	3.5		263035N
		4.0		263040N



	Angle	Gingiva Height	Platform Diameter	Ref. Code
 	17°	2.7	4.8	261727R
		3.5		261735R
	30°	3.5		263035R
		4.0		263040R



Screw Abutment Prosthetic Procedures



OVERDENTURE ABUTMENTS

For precise and durable overdentures NOTCH® Implant has a variety of options from conventional ball and locator abutments to innovative multi-loc coping.

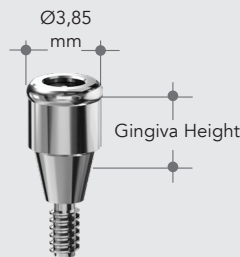
Ball Abutment

Used for implant-retained overdentures particularly in atrophied jaws. Parallelism is essential while using ball abutments.



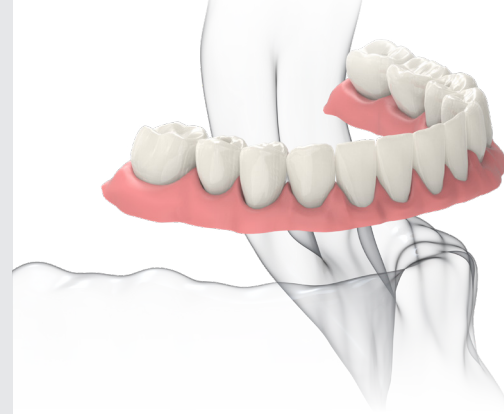
Locator Abutment

Used for implant-retained overdentures. Smaller vertical dimension and flat seating make Locator an ideal solution for the cases with esthetic demands. They also offer easier solution for the cases where parallelism is compromised.



Multi-Loc Overdenture

This innovative component equips dentists with two options with the cases requiring tilted implants. Multi-loc is used to have screw abutment supported overdenture or to switch to overdenture from fixed bridge.



Gingiva Height	NP	RP
1.0 mm	240010N	240010R
2.0 mm	240020N	240020R
3.0 mm	240030N	240030R
4.0 mm	240040N	240040R
5.0 mm	240050N	240050R
6.0 mm	240060N	240060R


25 NCM

Gingiva Height	NP	RP
1.0 mm	250010N	250010R
2.0 mm	250020N	250020R
3.0 mm	250030N	250030R
4.0 mm	250040N	250040R
5.0 mm	250050N	250050R
6.0 mm	250060N	250060R

35 NCM

Reference Code 280040C

Overdenture Attachments

Notch Implant GmbH collaborates with companies worldwide in order to offer its customers the highest quality available. By this approach, we supply our elastic caps for overdenture solutions from the world-renowned Italian company .

Retainers for Ball abutment



Color	Retention	Ref Code
Green	Elastic	AOD240140G
Yellow	Extra Soft	AOD240140Y
Pink	Soft	AOD240140P
Clear	Standart	AOD240140C
Black (Lab. Cap)	-	AOD240140B
Metal Housing	-	AOD240040M
Protective Disk	-	AOD240140D
Elastic Cap Pack	Multi	AOD240000P

Retainers for Locator abutment



Type	Color	Retention	Ref Code
With Pin	Yellow	Extra Soft	AOD260140Y
	Pink	Soft	AOD260140P
	Clear	Standart	AOD260140C
Without Pin	Violet	Hard	AOD260140V
	Yellow	Extra Soft	AOD250140Y
	Pink	Soft	AOD250140P
	Clear	Standart	AOD250140C
	Violet	Hard	AOD250140V
	Black (Lab. Cap)	-	AOD250140B
	Metal Housing	-	AOD250140M
	Protective Disk	-	AOD250140D
	Elastic Cap Pack	Multi	AOD260000P

Impression Coping

is used to make an impression of the positions of Locator abutments so that total denture is prepared in lab.

Lab Analog

is used to replicate positions of Locator abutments in stone cast.



System	Product	Ref Code
Locator	Impression Coping	PLI381010S
	Lab Analog	PLA381010S
Ball	Impression Coping	PBI381010S
	Lab Analog	PBA381010S



DIGITAL CAD/CAM Restorations


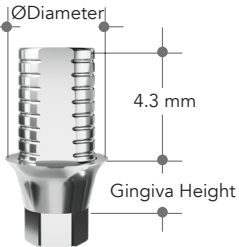

NOTCH® offers a simple and smooth digital workflow through simplified, high-precision components.

Using the same scanbodies for all NOTCH® Implant Systems will speed-up oral/model scanning session and enable you having different implant models in the same jaw more confidently.




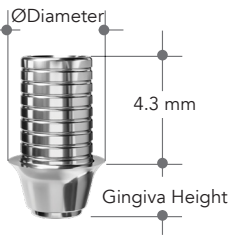

Ti-Base Engaged (Single Tooth)

is used for single tooth temporary or final restorations. Retentive micro grooves on post provides better attachment to crown.

	Profile D.	Gingiva Height	Post Height	Ref. Code	
 NP	4	0.7	4.3	420710N	
		2.5		422510N	
 RP	4.5	0.7	4.3	420710R	
		2.5		422510R	




Ti-Base Non-Engaged (Bridges/Bars)

is used for multiple tooth temporary or final restorations. Retentive micro grooves on post provides better attachment to crown.

	Profile D.	Gingiva Height	Post Height	Ref. Code	
 NP	4	0.7	4.3	420700N	
		2.5		422500N	
 RP	4,5	0.7	4.3	420700R	
		2.5		422500R	

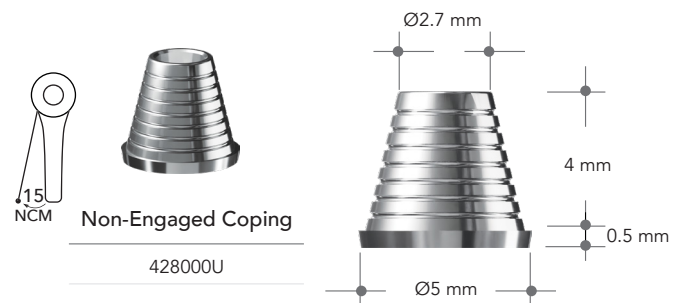
Premill Abutment

Customized abutments has major advantages over stock abutments where esthetics is prerequisite. With premilled hexagonal and conical part genuine NOTCH® premill abutments offer better and safer outcomes.

	Profile D.	Type*	Post Height	Ref. Code	
 NP	11,5	A	19,3	432011N	
		B		442011N	
 RP	11,5	A	19,3	432011R	
		B		442011R	

Screw Retained Copings

is used for CAD/CAM restorations on screw abutments. Engaged coping is used for single tooth and non-engaged is for bridges and bars.

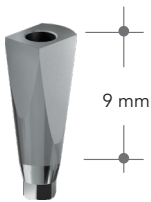


*Type A indicates European Type Connection
Type B indicates Non-European connection

SCANBODY AND DIGITAL ANALOG

Scanbody

(Implant Level)



Scanbody

NP

RP

400010N

400020R

Digital Analog

for Printed Models

NP

RP

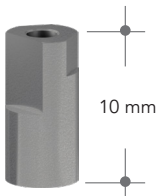
321007N

321008R



Scanbody

(Implant Level)



Scanbody Screw Abutment

400030U

Digital Analog

for Printed Models

321009U



Ti-Base Abutment



Engaged
(Single Tooth)



Non-Engaged
(Bridges/Bars)

Premill Abutment



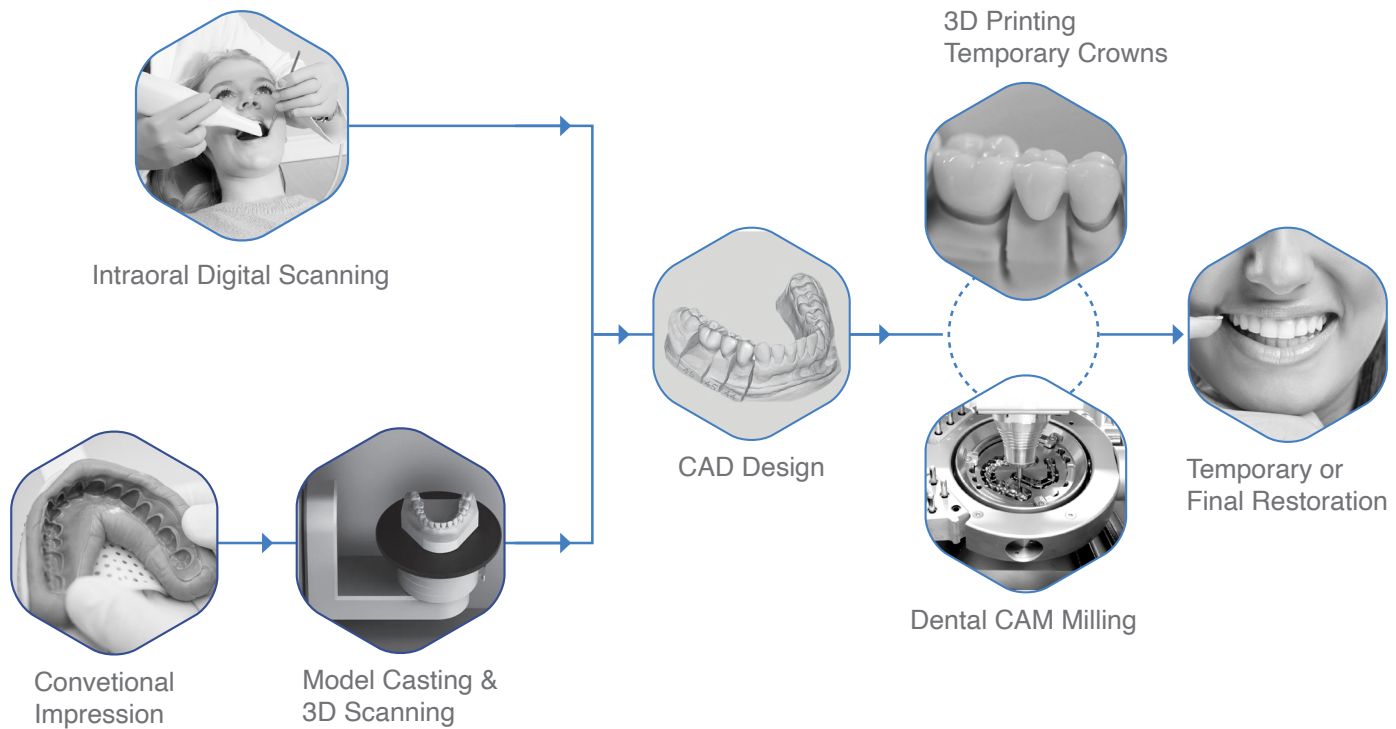
Screw Abutment Coping



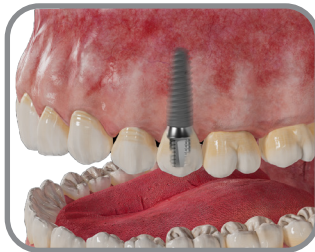
Screw Abutment

Angled Screw Abutment

Digital Workflow



Single Tooth



- Ti-Base Engaged Abutment
- Premill Abutment

Bridges/Bars



- Ti-Base Non-Engaged Abutment
- Screw Abutment
- 17° Angled Screw Abutment
- 30° Angled Screw Abutment

Full Arch



- Screw Abutment
- 17° Angled Screw Abutment
- 30° Angled Screw Abutment

Product **Ref Code**

Implants

SMART Implant NP Ø3.3 L8	113308N
SMART Implant NP Ø3.3 L10	113310N
SMART Implant NP Ø3.3 L11.5	113311N
SMART Implant NP Ø3.3 L13	113313N
SMART Implant NP Ø3.3 L16	113316N
SMART Implant NP Ø3.75 L8	113708N
SMART Implant NP Ø3.75 L10	113710N
SMART Implant NP Ø3.75 L11.5	113711N
SMART Implant NP Ø3.75 L13	113713N
SMART Implant NP Ø3.75 L16	113716N
SMART Implant RP Ø4.2 L8	114208R
SMART Implant RP Ø4.2 L10	114210R
SMART Implant RP Ø4.2 L11.5	114211R
SMART Implant RP Ø4.2 L13	114213R
SMART Implant RP Ø4.2 L16	114216R
SMART Implant RP Ø4.7 L8	114708R
SMART Implant RP Ø4.7 L10	114710R
SMART Implant RP Ø4.7 L11.5	114711R
SMART Implant RP Ø4.7 L13	114713R
SMART Implant RP Ø4.7 L16	114716R
SMART Implant RP Ø5.3 L8	115308R
SMART Implant RP Ø5.3 L10	115310R
SMART Implant RP Ø5.3 L11.5	115311R
SMART Implant RP Ø5.3 L13	115313R
SMART Implant RP Ø5.3 L16	115316R
UNIQUE Implant NP Ø3.3 L8	123308N
UNIQUE Implant NP Ø3.3 L10	123310N
UNIQUE Implant NP Ø3.3 L11.5	123311N
UNIQUE Implant NP Ø3.3 L13	123313N
UNIQUE Implant NP Ø3.3 L16	123316N
UNIQUE Implant NP Ø3.75 L8	123708N
UNIQUE Implant NP Ø3.75 L10	123710N
UNIQUE Implant NP Ø3.75 L11.5	123711N

Product **Ref Code**

UNIQUE Implant NP Ø3.75 L13	123713N
UNIQUE Implant NP Ø3.75 L16	123716N
UNIQUE Implant RP Ø4.2 L8	124208R
UNIQUE Implant RP Ø4.2 L10	124210R
UNIQUE Implant RP Ø4.2 L11.5	124211R
UNIQUE Implant RP Ø4.2 L13	124213R
UNIQUE Implant RP Ø4.2 L16	124216R
UNIQUE Implant RP Ø4.7 L8	124708R
UNIQUE Implant RP Ø4.7 L10	124710R
UNIQUE Implant RP Ø4.7 L11.5	124711R
UNIQUE Implant RP Ø4.7 L13	124713R
UNIQUE Implant RP Ø4.7 L16	124716R
UNIQUE Implant RP Ø5.3 L8	125308R
UNIQUE Implant RP Ø5.3 L10	125310R
UNIQUE Implant RP Ø5.3 L11.5	125311R
UNIQUE Implant RP Ø5.3 L13	125313R
UNIQUE Implant RP Ø5.3 L16	125316R
SHORT Implant NP Ø3.75 L6	133760N
SHORT Implant RP Ø4.2 L6	134260R
SHORT Implant RP Ø4.7 L6	134760R
SHORT Implant RP Ø5.3 L6	135360R
SHORT Implant RP Ø6.0 L6 (available on special request)	136060R

Abutments

DUAL Abutment NP Ø4.5 GH1.5	224515N
DUAL Abutment NP Ø4.5 GH3	224530N
DUAL Abutment NP Ø4.5 GH4.5	224545N
DUAL Abutment RP Ø4.5 GH1.5	224515R
DUAL Abutment RP Ø4.5 GH3	224530R
DUAL Abutment RP Ø4.5 GH4.5	224545R
DUAL Abutment RP Ø5.5 GH1.5	225515R
DUAL Abutment RP Ø5.5 GH3	225530R
DUAL Abutment RP Ø5.5 GH4.5	225545R
DUAL Abutment RP Ø6.0 GH1.5	226015R
DUAL Abutment RP Ø6.0 GH3	226030R

Product	Ref Code
DUAL Abutment RP Ø6.0 GH4.5	226045R
15° ESTHETiC Abutment NP GH1.5	231515N
15° ESTHETiC Abutment NP GH3.0	231530N
15° ESTHETiC Abutment NP GH4.5	231545N
15° ESTHETiC Abutment RP GH1.5	231515R
15° ESTHETiC Abutment RP GH3.0	231530R
15° ESTHETiC Abutment RP GH4.5	231545R
25° ESTHETiC Abutment NP GH1.5	232515N
25° ESTHETiC Abutment NP GH3.0	232530N
25° ESTHETiC Abutment NP GH4.5	232545N
25° ESTHETiC Abutment RP GH1.5	232515R
25° ESTHETiC Abutment RP GH3.0	232530R
25° ESTHETiC Abutment RP GH4.5	232545R
ESTHETiC Abutment NP Ø4.5 GH1.5	230015N
ESTHETiC Abutment NP Ø4.5 GH3.0	230030N
ESTHETiC Abutment NP Ø4.5 GH4.5	230045N
ESTHETiC Abutment RP Ø4.5 GH1.5	230015R
ESTHETiC Abutment RP Ø4.5 GH3.0	230030R
ESTHETiC Abutment RP Ø4.5 GH4.5	230045R
ESTHETiC Abutment RP Ø5.5 GH1.5	230115R
ESTHETiC Abutment RP Ø5.5 GH3.0	230130R
ESTHETiC Abutment RP Ø5.5 GH4.5	230145R
Screw Abutment NP GH1.5	260015N
Screw Abutment NP GH2.5	260025N
Screw Abutment NP GH3.5	260035N
Screw Abutment RP GH1.5	260015R
Screw Abutment RP GH2.5	260025R
Screw Abutment RP GH3.5	260035R
Screw Abutment RP GH4.5	260045R
17° Angled Screw Abutment NP GH2.7	261727N
17° Angled Screw Abutment NP GH3.5	261735N
17° Angled Screw Abutment RP GH2.7	261727R
17° Angled Screw Abutment RP GH3.5	261735R
30° Angled Screw Abutment NP GH3.5	263035N

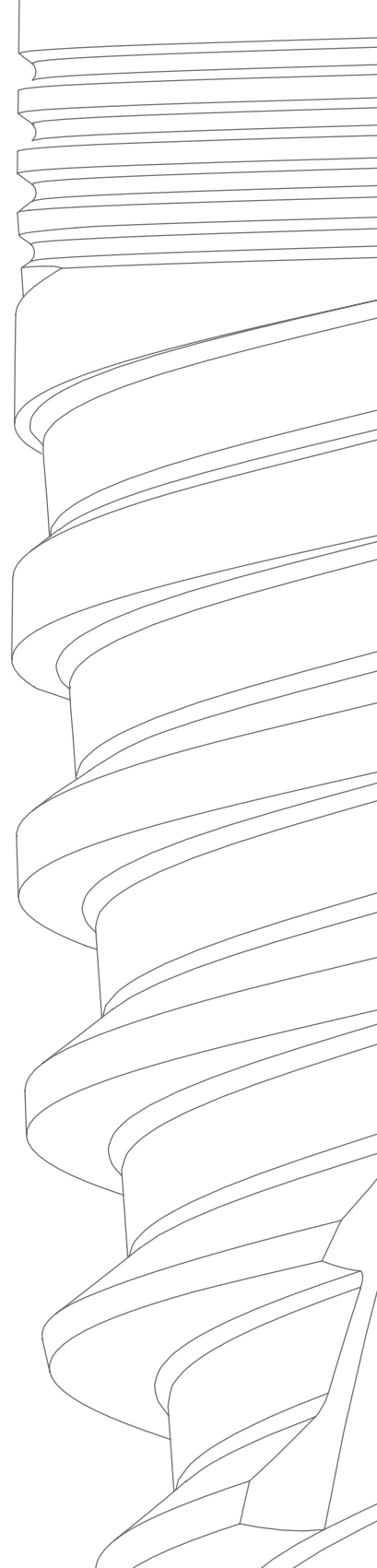
Product	Ref Code
30° Angled Screw Abutment NP GH4.0	263040N
30° Angled Screw Abutment RP GH3.5	263035R
30° Angled Screw Abutment RP GH4.0	263040R
Immediate Temporary Abutment NP Ø3.5 GH1.5	270115N
Immediate Temporary Abutment NP Ø3.5 GH3.0	270130N
Immediate Temporary Abutment RP Ø4.0 GH1.5	270115R
Immediate Temporary Abutment RP Ø4.0 GH3.0	270130R
Temporary Abutment for Implant NP Ø4.0 GH1.5	270215N
Temporary Abutment for Implant RP Ø4.5 GH1.5	270215R
Temporary Abutment for Implant RP Ø4.5 GH3	270230R
Temporary Abutment for Implant NP Ø4.0 GH1.5	270315N
Temporary Abutment for Implant RP Ø4.5 GH1.5	270315R
Temporary Abutment for Implant RP Ø4.5 GH3.0	270330R
Temporary Abutment for Screw Abutment	270400U
Overdenture	
Ball Abutment NP GH1.0	240010N
Ball Abutment NP GH2.0	240020N
Ball Abutment NP GH3.0	240030N
Ball Abutment NP GH4.0	240040N
Ball Abutment NP GH5.0	240050N
Ball Abutment NP GH6.0	240060N
Ball Abutment RP GH1.0	240010R
Ball Abutment RP GH2.0	240020R
Ball Abutment RP GH3.0	240030R
Ball Abutment RP GH4.0	240040R
Ball Abutment RP GH5.0	240050R
Ball Abutment RP GH6.0	240060R
Locator Abutment NP GH1.0	250010N
Locator Abutment NP GH2.0	250020N
Locator Abutment NP GH3.0	250030N
Locator Abutment NP GH4.0	250040N
Locator Abutment NP GH5.0	250050N
Locator Abutment NP GH6.0	250060N
Locator Abutment RP GH1.0	250010R

Product	Ref Code
Locator Abutment RP GH2.0	250020R
Locator Abutment RP GH3.0	250030R
Locator Abutment RP GH4.0	250040R
Locator Abutment RP GH5.0	250050R
Locator Abutment RP GH6.0	250060R
Ball Abutment Impression Coping (pack of 2 pcs.)	PBI381010S
Ball Abutment Lab Analog (pack of 2 pcs.)	PBA381010S
Ball Abutment ElasTic Cap - pack (pack of 7 pcs.)	AOD240000P
Ball Abutment ElasTic Cap - clear (pack of 4 pcs.)	AOD240140C
Ball Abutment ElasTic Cap - green (pack of 4 pcs.)	AOD240140G
Ball Abutment ElasTic Cap - pink (pack of 4 pcs.)	AOD240140P
Ball Abutment ElasTic Cap - yellow (pack of 4 pcs.)	AOD240140Y
Ball Abutment Lab Cap - black (pack of 4 pcs.)	AOD240140B
Ball Abutment Metal Housing (pack of 2 pcs.)	AOD240140M
Ball Abutment ProtecTive Disk (pack of 4 pcs.)	AOD240140D
Locator Abutment Impression Coping (pack of 2 pcs.)	PLI381010S
Locator Abutment Lab Analog (Pack of 2 pcs.)	PLA381010S
Locator Abutment ElasTic Cap - pack (pack of 7 pcs.)	AOD250000P
Locator Abutment ElasTic Cap - clear (pack of 4 pcs.)	AOD250140C
Locator Abutment ElasTic Cap - pink (pack of 4 pcs.)	AOD250140P
Locator Abutment ElasTic Cap - violet (pack of 4 pcs.)	AOD250140V
Locator Abutment ElasTic Cap - yellow (pack of 4 pcs.)	AOD250140Y
Locator Abutment Lab Cap - black (pack of 4 pcs.)	AOD250140B
Locator Abutment Metal Housing (pack of 2 pcs.)	AOD250140M
Locator Abutment ProtecTive Disk (pack of 10 pcs.)	AOD250140D
Locator Abutment ElasTic Cap with pin - pack (pack of 7 pcs.)	AOD260000P
Locator Abutment ElasTic Cap with pin - clear (pack of 4 pcs.)	AOD260140C
Locator Abutment ElasTic Cap with pin - pink (pack of 4 pcs.)	AOD260140P
Locator Abutment ElasTic Cap with pin - violet (pack of 4 pcs.)	AOD260140V
Locator Abutment ElasTic Cap with pin - yellow (pack of 4 pcs.)	AOD260140Y
Locator Abutment Lab Cap with pin - black (pack of 4 pcs.)	AOD260140B
Caps InserTion ExtracTion Tool	MIN488010C
Digital & Cad/Cam	
Premill Abutment NP Ø11,5 Type A	APA432011N
Premill Abutment RP Ø11,5 Type A	APA432011R

Product	Ref Code
Premill Abutment NP Ø11,5 Type B	APA442011N
Premill Abutment RP Ø11,5 Type B	APA442011R
Ti Base Bridges/Bars NP GH0.7	420700N
Ti Base Bridges/Bars RP GH0.7	420700R
Ti Base Bridges/Bars NP GH2.5	422500N
Ti Base Bridges/Bars RP GH2.5	422500R
Ti Base Single Tooth NP GH0.7	420710N
Ti Base Single Tooth RP GH0.7	420710R
Ti Base Single Tooth NP GH2.5	422510N
Ti Base Single Tooth RP GH2.5	422510R
Scanbody NP	400010N
Scanbody RP	400020R
Screw Abutment Scanbody	400030U
Digital Analog NP	321007N
Digital Analog RP	321008R
Screw Abutment Digital Analog	321003U
Prosthetics	
Healing Abutment NP Ø3.6 GH3	213630N
Healing Abutment NP Ø3.6 GH5	213650N
Healing Abutment NP Ø3.6 GH7	213670N
Healing Abutment NP Ø4.5 GH3	214530N
Healing Abutment NP Ø4.5 GH5	214550N
Healing Abutment NP Ø4.5 GH7	214570N
Healing Abutment RP Ø5.0 GH3	215030R
Healing Abutment RP Ø5.0 GH5	215050R
Healing Abutment RP Ø5.0 GH7	215070R
Healing Abutment RP Ø6.0 GH3	216030R
Healing Abutment RP Ø6.0 GH5	216050R
Healing Abutment RP Ø6.0 GH7	216070R
Screw Abutment ProHealing Cap	331030U
Closed Impression Coping NP Ø3,6 L9	303600N
Closed Impression Coping NP Ø3,6 L13	PIC303613N
Closed Impression Coping NP Ø4,5 L9	304500N
Closed Impression Coping NP Ø4,5 L13	PIC304513N
Closed Impression Coping RP Ø4 L13	PIC304013R

Product	Ref Code
Closed Impression Coping RP Ø4,5 L13	PIC304513R
Closed Impression Coping RP Ø5 L9	305000R
Closed Impression Coping RP Ø6 L9	306000R
Open Impression Coping NP Ø3,6	313600N
Open Impression Coping NP Ø4,5	314500N
Open Impression Coping RP Ø5	315000R
Open Impression Coping RP Ø6	316000R
Screw Abutment Open Impression Coping	331001U
Analog NP	321000N
Analog RP	321001R
Ball Abutment Analog	321003N
Locator Abutment Analog	321005N
Screw Abutment Analog	321002U
Surgical Kit	
NOTCH Surgical Kit - equipped	KSK500000K
Marker Drill	511818D
Stopper Pilot Drill Ø2.0 L6	512006D
Stopper Pilot Drill Ø2.0 L8	512008D
Stopper Pilot Drill Ø2.0 L10	512010D
Stopper Pilot Drill Ø2.0 L11.5	512013D
Stopper Pilot Drill Ø2.0 L13	512016D
Twist Drill Ø2.4 / 2.8	512428D
Twist Drill Ø2.8 / 3.2	512832D
Twist Drill Ø3.2 / 3.6	532236D
Twist Drill Ø3.6 / 4.0	523640D
Twist Drill Ø4.0 / 4.5	524045D
Twist Drill Ø4.5 / 5.0	524550D
Shank Extension	KIN552022E
Parallel Pin / Depth Guide Ø2.0	522020P
Parallel Pin / Depth Guide Ø3.3	523300P
Parallel Pin / Depth Guide Ø3.75	523700P
Parallel Pin / Depth Guide Ø4.2	524200P
Parallel Pin / Depth Guide Ø4.7	524700P
Parallel Pin / Depth Guide Ø5.3	525300P
Tapping Drill (SMART & SHORT Implant) Ø3.75	533700B

Product	Ref Code
Tapping Drill (SMART & SHORT Implant) Ø4.2	534200B
Tapping Drill (SMART & SHORT Implant) Ø4.7	534700B
Tapping Drill (SMART & SHORT Implant) Ø5.3	535300B
Cortical Drill (UNIQUE Implant) Ø3.75	543700C
Cortical Drill (UNIQUE Implant) Ø4.2	544200C
Cortical Drill (UNIQUE Implant) Ø4.7	544700C
Cortical Drill (UNIQUE Implant) Ø5.3	545300C
Screw Driver Short Hex 1.25 mm	550010S
Screw Driver Long Hex 1.25 mm	550020S
Handpiece Screw Driver Hex 1.25 mm	550030S
Implant Driver NP Short	552228I
Implant Driver NP Long	552237I
Implant Driver RP Short	552628I
Implant Driver RP Long	552637I
Torque Wrench	561000T
Ratchet Adapter	554018A
Handle	561001H
Miscellaneous	
Cover Screw NP	203358N
Cover Screw RP	203858R
Screw Abutment Burn Out Cylinder	505811U
Screw Abutment Coping	428000U
Abutment Screw NP M1.6	341610U
Abutment Screw RP M2.0	342010U
Prosthetic Screw M1.4	341410U
Screw (Angled Abutment) NP M1.6 L6.7	341611U
Screw (Angled Abutment) RP M2.0 L6.7	342011U
Screw (Digital Analog) M1.6 L4.80	371610U
MultiLoc Coping	280040C
Marketing & Training	
Overdenture Demo Model - Locator	TRM000001U
NOTCH Implant Acrylic Display	TRM000002U
NOTCH Digital Parts Acrylic Display	TRM000003U
NOTCH Implant Show Case	TRM000004U





Natural Smiles 

**NOTCH IMPLANT
GmbH**

Zum Schnüffel 6,
58540 Meinerzhagen
Germany

 +49 2354 778 9224

 info@notchimplant.com

 notchimplant.com

